



Field Notes

Ingapirca

(Incan Site in Southern Ecuadorean Andes)

Table of Contents

Fordham University

Sociology & Anthropology

Volume: I | Spring 2015

Faculty Highlight: Dr. Christine Fountain

Faculty Highlight, Dr. Christine Fountain, Assistant Professor of Sociology, for her research in autism diagnoses and Assisted Reproductive Technologies.

3

Faculty Highlight: Dr. Christopher Rhomberg

Faculty Highlight, Dr. Christopher Rhomberg, Associate Professor of Sociology, for his research in the labor movements.

4

Faculty News

Congratulations to our professors for all of the great work they are doing in research.

5

Department News

Read about the new departmental honors track.

6

Honors Society

Congratulations to the 33 students being inducted into the International Honor Society, Alpha Kappa Delta inductees!

6

Summer Course Offerings

Take a look at the exciting courses being offered during the summer session (2015).

7

Summer Course Highlight

View some of the summer course flyers!

7

Fall Course Offerings

View the list of fall semester (2015) courses on both campuses.

8

Dr. Christine Fountain: Assistant Professor of Sociology

Dr. Fountain's research interests are in the areas of sociology of health, autism and assisted reproduction, and in economic sociology.

Interested in the increased prevalence of diagnosed autism in the United States in recent decades, Dr. Fountain has spent the last several years working with researchers at Columbia University and the Centers for Disease Control and Prevention (CDC) in Atlanta on a project to understand the social forces at work in the ten-fold escalation of cases over the last forty years.

Dr. Fountain believes that the "epidemic" spread of this non-contagious disorder is to a large extent a social phenomenon, arising from demographic, geographic, social, political forces. In order to understand the factors, she and collaborators have constructed the largest existing dataset on this question, containing information on the family characteristics, local environments, conception, and autism and intellectual disability careers of the population of children born in California from 1992-2007.

One key factor identified in this research is a broad shift in the age and timing of childbearing. Assisted Reproductive Technologies (ART), such as in vitro fertilization, have become increasingly common and it was widely suspected that ART is associated with autism. However, this relationship is complicated by the fact that ART and autism diagnosis share several social and demographic correlates. The project has successfully constructed a dataset composed of millions of births, linked to developmental disability outcomes, in order to assess these relationships.

The availability of ART has shifted biologically motivated age restraints on childbearing. These changes to the reproductive landscape are coincidental, and connected with other large-scale shifts. This ART and birth data, linked with population level, provide a unique opportunity to examine the role it plays in family formation, reproductive decisions and how this has unfolded over time. Further work done with this research appears in a publication through the *American Journal*



of Public Health entitled "Association Between ART Conception and Autism in California 1997-2007".

A number of articles arose from this work, one in December in *Human Reproduction*, the premier specialty journal for fertility research. Another article, forthcoming in the *Journal of Autism and Developmental Disability*, looks more closely at the symptoms and severity of autism in both ART and non-ART conceptions, and assesses a possible social mechanism for the association: whether children conceived with ART receive more autism diagnoses because they are monitored more carefully.

Dr. Fountain is currently working on a publication analyzing a sample that matches ART-conceived children to their spontaneously conceived siblings (when available) who serve as a "control" group in order to further untangle the biological and social mechanisms of the association. She hopes this will be an important sociological contribution to understanding the role of differential ascertainment in autism diagnosis.

For more information on Dr. Fountain's work, visit Fordham News: <http://goo.gl/Js3K2P>

Dr. Christopher Rhomberg: Associate Professor of Sociology



Dr. Rhomberg is currently working with departmental faculty colleague, Dr. Heather Gautney, on a research project focusing on changes in the labor process in the U.S. film industry. In the last decade or so, the film industry has expanded beyond its traditional bases in Los Angeles and New York City to cities and states throughout the country, in response to generous tax incentives offered by states like Louisiana, New Mexico, and Georgia. The study examines the impacts of this spatial dispersal on workers and local communities and on the forms of workplace and labor market governance in the industry.

Drs. Rhomberg and Gautney received conditional acceptance for an article on the film industry from a leading journal in urban sociology, and are currently working on a final revised draft. They expect to generate additional articles from their study, including a methodological piece on the dynamics of path dependency and urban agglomeration among several cases. They are also planning a book manuscript, and are working on

an outline of chapters.

Since the publication of his book, *The Broken Table: The Detroit Newspaper Strike and the State of American Labor*, Dr. Rhomberg has written a paper that traces the origins of the rapid decline of American newspapers. The causes were not simply technological, he argues but come from the shift in the 1970s toward publicly-traded stock ownership of papers and the re-structuring of the industry to maximize shareholder value. This month, April 2015, Dr. Rhomberg presented a draft of the paper at the International Labor Process Conference in Athens, Greece.

Dr. Rhomberg is also collaborating with Dr. Steve Lopez of Ohio State University on revising theories of strikes and workplace protest from a global perspective in the 21st century. Dr. Rhomberg was invited to join a delegation of scholars from the American Sociological Association's section on Labor and Labor Movements to an international conference on industrial relations, held in Beijing in December 2014. At the conference, he presented a paper on the legal regulation of strikes in the United States.

Dr. Rhomberg has been selected, along with Dr. Eli Friedman of Cornell University and Dr. Lopez, to organize a special thematic session on the comparative politics of workplace mobilization at the 2016 American Sociological Association meeting in Seattle. He will also be organizing a regular session on the comparative analysis of strikes for the 2016 International Sociological Association Forum in Vienna. They are hopeful that the conference sessions will help identify people that would like to contribute to an edited collection or special journal issue on this topic.

Faculty News

Dr. Jeanne Flavin's, Professor of Sociology, research was discussed in *The New York Times* and *Democracy Now* as a part of coverage of the conviction and sentencing of Purvi Patel in Indiana for feticide.

Dr. Flavin and Lynn M. Paltrow, Executive Director of National Advocates for Pregnant Women, conducted a study of cases similar to Patel's. Their study identified hundreds of cases where women were arrested, detained, or otherwise deprived of their physical liberty for actions taken during their pregnancies. The consequences included arrests; incarceration; increases in prison or jail sentences; detentions in hospitals; mental institutions; and drug treatment programs; and forced medical interventions.

For more information: <http://goo.gl/vNYQG4>

Dr. Allan Gilbert, Professor of Anthropology and Associate Chair of the department, was highlighted in Fordham news. Dr. Gilbert is working with Roger Wines on a paper that will be coming out in the Bronx County Historical Society Journal.

The paper focuses on possibly the earliest electrical generating in the Bronx, which was initiated in 1888 and located at St. John's College, Fordham's precursor institution. It was situated in Thebaud Hall's basement and produced DC current to illuminate light bulbs in the college buildings of the time. The occasion to review these events and document them through university archival records was the discovery of a first generation light bulb base and bulb fragments in the Rose Hill manor excavation, which were conducted between 1985 and 2002.



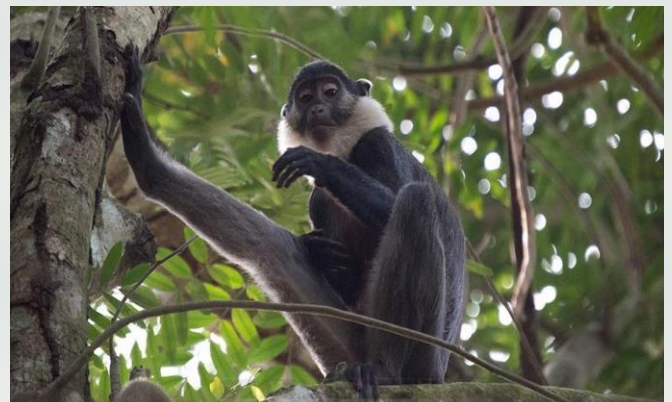
(Photo courtesy of Fordham News)

Dr. Ayala Fader, Associate Professor of Anthropology, advisee Katie Rofey, Fordham College at Lincoln Center, Class of 2015, was recently awarded a National Science Foundation Undergraduate Research Grant, a supplement to Dr. Fader's NSF grant on religious orthodoxy and new media.

Rofey will do post-graduation work on children in mixed faith families (Muslim/Jewish) in London this fall. Congratulations Katie!

Dr. Reiko Matsuda Goodwin, an Adjunct Professor of Anthropology, was highlighted in Fordham News for her recent work surveying rare and threatened monkey species in the Republic of Benin. She is an expert on guenon behavioral ecology and primate conservation issues. She is also the chief administrator of the Guenon Conservation Community. She was invited to return to the country by the Chief of Research and Education at *Organisation pour le Développement Durable et la Biodiversité* (<http://www.oddbong.org>), a local non-profit conservation organization in the West African country, to collaborate with them in conducting primate research and in conservation education regarding the threatened monkeys, especially the red-bellied guenon and white-thighed colobus.

Dr. Matsuda Goodwin will be returning to Benin this summer to teach local biologists about techniques and theories applied in primate conservation biology and conduct primate surveys in Nigeria. This training will be funded by Chester Zoo and the International Primatological Society. We look forward to reading about her summer endeavors.



A red-bellied guenon (Photo courtesy of Reiko Matsuda Goodwin)

Honors Track

Our Departmental Honors track has been approved by the Deans' Council and our first cohort of five will begin in Fall 2015.

Honor track students will be enrolled in a four-credit thesis course in the Fall of their senior year and defend their thesis in December of their senior year in a public event. Graduation requirements for departmental honors include meeting a minimum 3.5 GPA in the major and earning a B or higher on the thesis. Students' transcripts will note that they completed the major in anthropology or sociology "with honors".

Our first cohort includes:

- ❖ Danielle King, RH Anthropology, who will be working with Hugo Benavides on mortuary rituals amongst the Australian Aborigines.
- ❖ Jessica Novak, LC Anthropology, who will be working with Ayala Fader on anthropology of consumption in post socialist societies.
- ❖ Mikela Ryan, RH Sociology, who will be working with Matthew Weinshanker on changes in attitudes on marriage and family.
- ❖ Anthoula Vasiliou, RH Sociology, who will be working with Orit Avishai and Emily Rosenbaum on inequalities in education.
- ❖ Sarah Voor, RH Anthropology, who will be working with Allan Gilbert on a bioarcheology project.

Dr. Orit Avishai and Dr. Emily Rosenbaum served on the ad hoc Honors Admissions Committee.

Congratulations to the students and thank you to the mentors.

Honors Society

This Spring 2015 we are inducting 33 new members into the International Honor Society Alpha Kappa Delta.

This was open to all Sociology and Anthropology majors and minors at Lincoln Center and Rose Hill. Initiates have a GPA of 3.25 or higher in their major or minor.

There will be an induction ceremony for lifetime membership in AKD in the department at Rose Hill on Thursday, May 7 at 4 pm (Alternate date is Thursday, May 14 at 4 pm). **Dr. Doyle McCarthy**, Professor of Sociology, has been serving as AKD faculty moderator since the chapter was reactivated in 2012.

Alpha Kappa Delta 2015 Inductees

Stephanie Ali	Maureen McKenna
Matthew Aqeel	Megan Meighan
Tiffany Arred	Sierra Mitchell
Samantha Banjany	Katie Moran
Sonia Barakat	Rachel Picard
Victoria Brown	Andrew Punzo
Cynthia Caceres	Gianna Sciangula
Danielle Casale	Benjamin St. Clair
Lauren Cook	Gabriella Stevens
Rebecca Curland	Anthoula Vasiliou
Danielle Dixon	Michaela Winch-Peterson
Cherdonna Epps	Canton Winer
Julia Fitzgerald	Caroline Wolff
Kaitlyn Flanagan	Michael Menconi Jr.
Sarah Glockenmeier	Amanda Tuccio
Kevin Greene	Debora Villarreal
Julia Harris	

Upcoming Summer Course Offerings

Introduction to Physical Anthropology – ANTH 1200 –

Dr. Matsuda Goodwin – RH

The evolution of humanity, paying special attention to the development of intelligence, language, and racial characteristics.

Intro to Archaeology – ANTH 1300 – Prof. Consroe – LC

Students will examine the ways by which archaeologists have inferred former patterns of behavior from surviving evidence through traditional methods as well as new scientific techniques.

Introduction to Forensic Anthropology – ANTH 2520 –

Prof. Consroe –RH

Survey methods in crime scene investigation and forensic archaeology.

Art Worlds: Anthropology and Sociology Perspectives –

ANTH 4004 – Dr. McGee/Sawalha – LC

This course will analyze many of the arts and artistic communities of New York City.

Introduction to Sociology – SOCI 1100 –Dr. Miyawaki – RH

Analysis of society through the use of sociological theories, concepts, and methods.

Social Science Statistics – SOCI 2606 – Dr. Weinshenker – LC

Introduces the student to the basic concepts of both descriptive and inferential statistics.

Social Theory at the Cinema – SOCI 2801 – Dr. McGee – LC

This survey of classical and contemporary theory looks at sociological theory through the lens of mainstream and independent cinema.

Media, Crime, Sex and Violence – SOCI 2925 – Prof. Wormser – RH

Analysis of mass media reporting, presentation, and explanation.

Sociology of Sports – SOCI 3152 – Prof. Spiegelman – RH

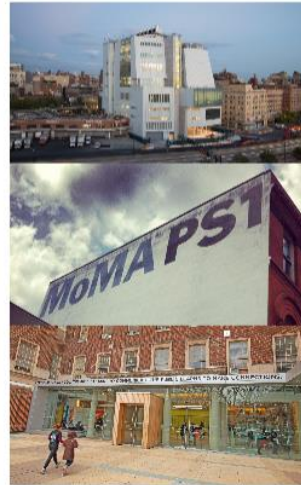
Study of sports and athletics importance in societies.

ART WORLDS: SOCIOLOGICAL & ANTHROPOLOGICAL PERSPECTIVES

SOCI & ANTH 4004 • SUMMER SESSION 2015

May 26–Jun 25, 1-4pm • LINCOLN CENTER

Professors Micki McGee and Aseel Sawalha



Experience art and culture not only as aesthetic undertakings, but also as institutional, economic, social and political phenomena. Incorporating methods and insights from sociology and anthropology, and drawing on the resource of the immediate context of New York City's cultural communities and institutions, this course analyzes the arts and artistic communities.

- Field Trips
- Screenings
- Group Discussions
- Guest Speakers
- Presentations

And meets the ICC and Advanced Social Science core requirements!

For more information, email asawalha@fordham.edu

SOCIAL THEORY AT THE CINEMA

SOCI-2801 • SUMMER SESSION I 2015

May 26–Jun 25, 9am-12noon • LINCOLN CENTER

What students say about Professor Micki McGee's **SOCIAL THEORY AT THE CINEMA:**

"Definitely take this class if you are at all interested in social issues and/or films!"

"The theory aspect of the class is made fun and easy to understand by watching it play out in movies from different time periods and genres."

"Usually a small class, there is lots of great discussion and feedback throughout the course."

"You will learn so much about the way society works and discuss how best to respond to negative aspects of society in order to make it a better system for all."

"The independent research project is also a great opportunity to go into greater depth about a social issue of your choosing and apply that subject to films you're interested in and relevant theory."

For more information contact mmcgee@fordham.edu



And meets the sociological theory requirement for the Sociology major/minor and the Advanced Social Science core requirement!



Media, Sex, Crime & Violence



Summer
Session I
2015
Rose Hill



Prof. Wormser

2015

9:00A.M. – 12:00P.M.
Sociology & Anthropology

Turn on the television set, pick up the local newspaper, go on the Internet or watch a movie. Wherever you turn, you will find the media saturated with stories about corrupt cops and honest cops, drug dealers and drug users, murderers and victims, organized crime and serial killers, crusading district attorneys and defense attorneys, corrupt lawyers and hanging judges, violent prisoners and convicted innocents. How accurate are these representations? What are the ideological messages and cultural values these stories communicate? In this course, you will learn how to demystify media representations in order to understand how and why they are produced, and who is responsible for their production.

Fall 2015 Course Offerings

Rose Hill Course Offerings

Anthropology Focus	ANTH 1050 – R01
Intro to Cultural Anthro	ANTH 1100 – R01
Intro to Cultural Anthro	ANTH 1100 – R02
Intro to Cultural Anthro	ANTH 1100 – R03
Intro to Physical Anthro	ANTH 1200 – R01
Intro to Physical Anthro	ANTH 1200 – R02
Intro to Archaeology	ANTH 1300 – R01
Magic, Science & Religion	ANTH 2619 – R01
You Are What You Eat	ANTH 2700 – R01
Human Sexuality	ANTH 2880 – R01
Anthro of Economics	ANTH 2885 – R01
Anc Cult of the Bible	ANTH 3110 – R01
Comparative Cultures	ANTH 3351 – R01
Politics of Memory	ANTH 3400 – R01
Forensic Inv Human Skeleton	ANTH 3520 – R01
Enviro & Human Survival	ANTH 4373 – R01
Senior Thesis	ANTH 4998 – R01
Senior Thesis	ANTH 4998 – R02
Sociology of Amer Culture	SOCI 1025 – R01
Sociology Focus	SOCI 1050 – R01
Sociology Focus	SOCI 1050 – R02
Sociology Focus	SOCI 1050 – R03
Sociology Focus	SOCI 1050 – R04
Intro to Sociology	SOCI 1100 – R01
Intro to Sociology	SOCI 1100 – R02
Intro to Sociology	SOCI 1100 – R03
Intro to Sociology	SOCI 1100 – R04
Intro to Sociology	SOCI 1100 – R05
Intro to Sociology	SOCI 1100 – R06
Intro to Criminal Justice	SOCI 2701 – R01
Sociological Theory	SOCI 2800 – R01
Sociological Theory	SOCI 2800 – R02
Methods Social Resrch I	SOCI 2850 – R01
Methods Social Resrch I	SOCI 2850 – R02
Methods Social Resrch I	SOCI 2850 – R03
Media Crime Sex Violence	SOCI 2925 – R01
Science Fiction & Soc Crisis	SOCI 2965 – R01
Controversies: Relig/Ir	SOCI 3120 – R01
Gender, Race, Class	SOCI 3405 – R01
Diversity in Amer Families	SOCI 3506 – R01

Violence and Politics	SOCI 3710 – R01
Gender, Bodies, Sexuality	SOCI 4400 – R01
Intern Sem: Community Orgs	SOCI 4902 – R01
Urban Issues & Policies	SOCI 4961 – R01
Dilemmas of Modern Self	SOCI 4971 – R01
Conflict Resol & Justic	SOCI 4990 – R01
Senior Thesis	SOCI 4998 – R01
Senior Thesis	SOCI 4998 – R02

Lincoln Center Course Offerings

Intro to Cultural Anthro	ANTH 1100 – L01
Intro to Cultural Anthro	ANTH 1100 – L02
Intro to Physical Anthro	ANTH 1200 – L01
Anthropology of Performance	ANTH 2202 – L01
Urbanism&Change Mid East	ANTH 2614 – L01
Magic, Science & Religion	ANTH 2619 – L01
Anthro of Health & Healing	ANTH 4114 – L01
Intro to Sociology	SOCI 1100 – L01
Intro to Sociology	SOCI 1100 – L02
Inequality: Class, Race, Eth	SOCI 2410 – L01
Basic Research Methods	SOCI 2650 – L01
Gender, Crime, Justice	SOCI 3401 – L01
Urban Poverty	SOCI 3601 – L01
Mass Incarceration	SOCI 3720 – L01
Diversity in Amer Society	SOCI 4408 – L01

Contact Us:

Department of Sociology and Anthropology
Dealy Hall, Room 403
Phone: (718) 817-3850

Visit Our Website:

www.fordham.edu

Follow Us on Twitter:

@FordhamSocAnthr

Like Us on Facebook:

Fordham Sociology & Anthropology Department