

Layers of London

Matthew Davies
Birkbeck, University of London



Layers of London

Funding raised by
The National Lottery
and awarded by the Heritage Lottery Fund



IHR INSTITUTE OF
HISTORICAL
RESEARCH

SCHOOL OF
ADVANCED STUDY
UNIVERSITY
OF LONDON





Layers of London



[Map](#)

[Learning](#)

[Get involved](#)

[Help centre](#)

[News & events](#)

[About](#)

[Contact us](#)

[Log in](#)

[Create an account](#)



Layers of London

Recording the
layers of
London's rich
heritage

▶ EXPLORE THE MAP

Feedback

HIGHLIGHTS



Feminist History in the East
End - a walk

Search records on the map

GO

Search for a place or topic you're interested in...





The Layers of London project

What is it?

Large digital resource: London from the Romans to the present day

digitised historic maps and data from key heritage partners

content creation via crowd-sourcing, georeferencing, curated datasets, schools, local projects across London's boroughs

online Hub for London history: toolkits, resources



The Layers of London project

What do we want to do?

Uncover, record, share multiple 'histories' of London

Encourage, enable local/community/school/academic projects

Preserve and share lost/disappearing heritage

Provide access to unique heritage resources, such as maps and datasets

Establish Layers as a platform for creating and sharing collections about London's past, present (and future)

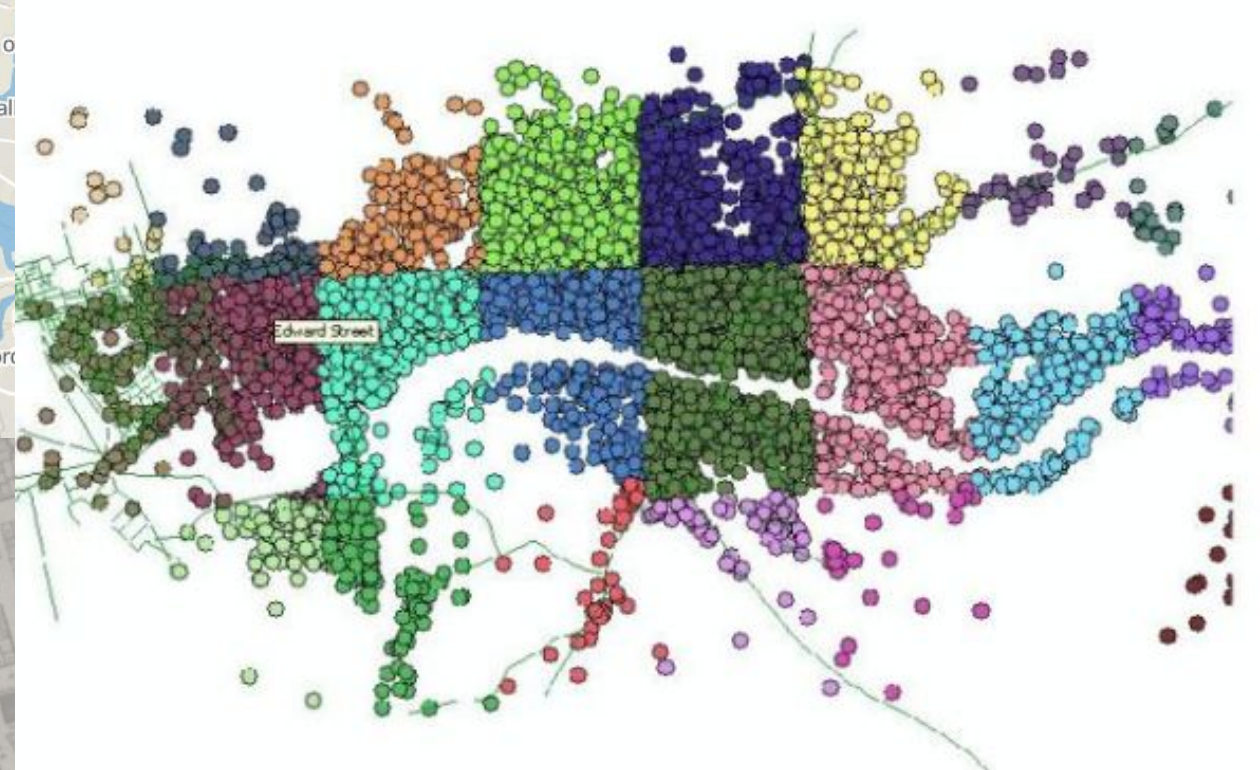


Types of content:

Records – individual ‘pins’ attached to places, with associated images, video/audio files, documents.

Collections – groups of Records created by users/groups and linked by theme, place etc. Can be owned/shared by multiple users or teams.

Layers – eg. historic maps, aerial photographs, curated datasets etc.



Georeferencing: John Rocque's map of 1746

8 georeferenced historic maps added so far:

- London in c.1520
- Faithorne and Newcourt, 1658
- Ogilby and Morgan, 1676
- William Morgan, 1682
- John Rocque, 1746
- Richard Horwood, 1799
- C. and J. Greenwood, 1827
- Bomb Damage map, 1945

2 sets of O.S. maps:

- 1893-6





J. Ogilby and W. Morgan, *Large and accurate map of the City of London*, 1676



W. Morgan, *London Actually Survey'd*, 1682



Layers of London

Streets and places appearing on William Morgan's 1682 map

The screenshot shows the ArcMap interface with the following elements:

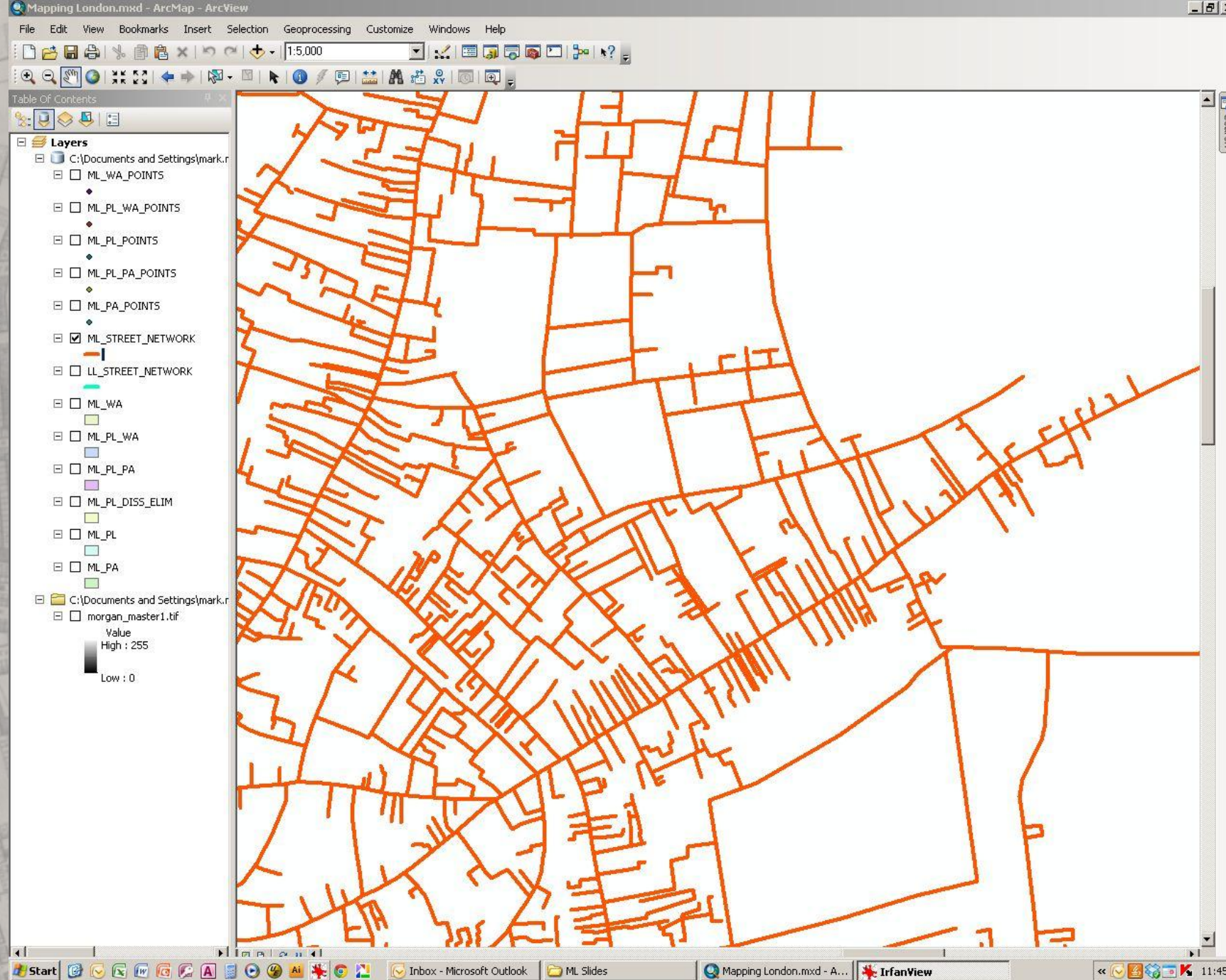
- Menu Bar:** File, Edit, View, Bookmarks, Insert, Selection, Geoprocessing, Customize, Windows, Help.
- Toolbar:** Standard GIS navigation and editing tools.
- Scale:** 1:2,000.
- Table of Contents:**
 - Layers:
 - ML_WA_POIN
 - ML_PL_WA_F
 - ML_PL_POIN
 - ML_PL_PA_Pc
 - ML_PA_POIN
 - ML_PL_WA
 - ML_PA
 - ML_WA
 - ML_PL
 - ML_PL_PA
 - morgan_mast
 - Value: High : 255
 - Low : 0

The map displays a historical street layout with pink overlays. Labeled streets include Wormwood Street, Broad Street, Cornhill, and Leaden Hall Street. Landmarks such as Drapers' Gardens, Dutch Church, and Gresham College are visible. The taskbar at the bottom shows the Start button, several application icons, and the current project name 'Mapping London.mxd - A...'.



Layers of London

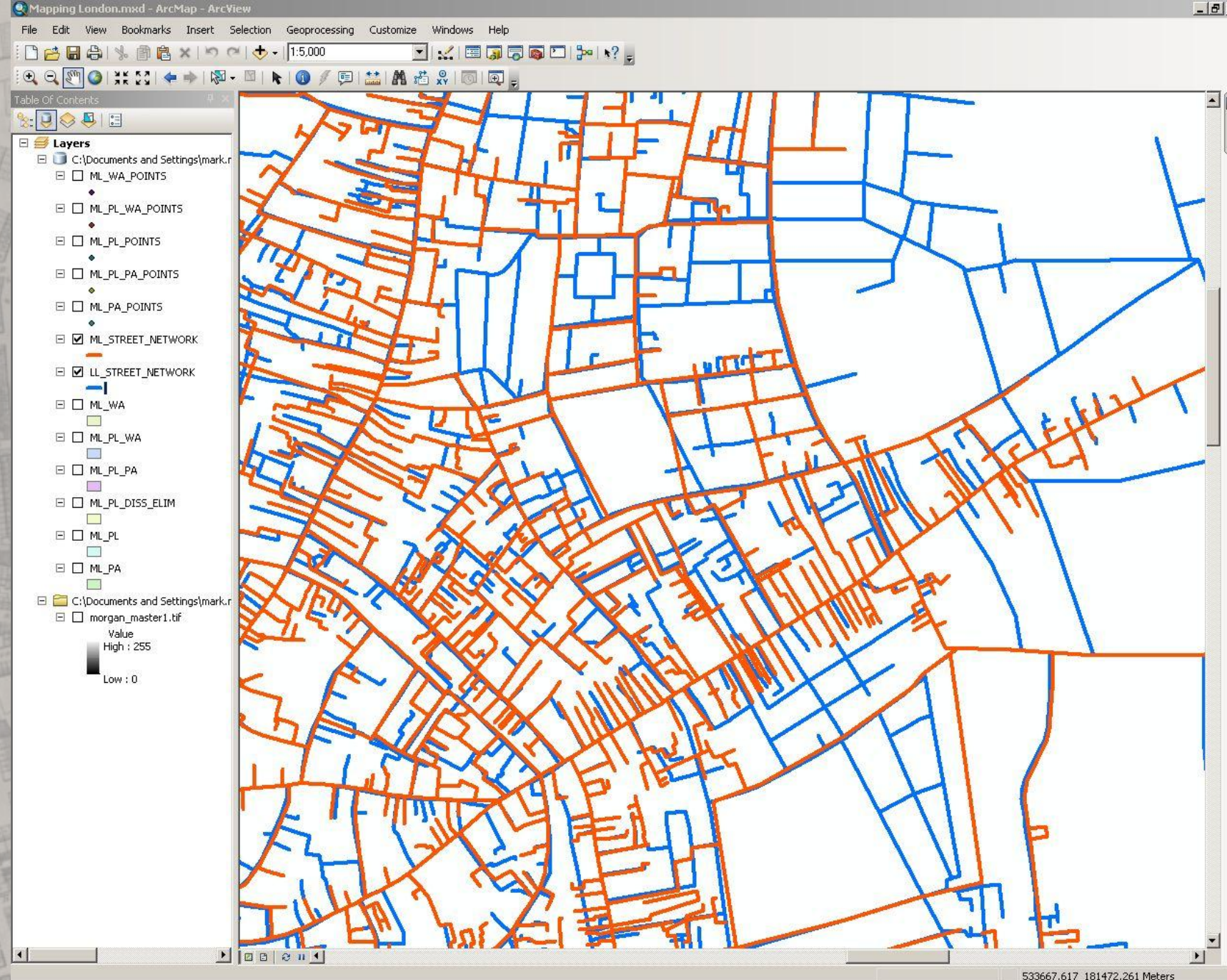
Streets on the eastern fringe of the City in 1682





Layers of London

Streets on the eastern fringe of the City in 1682 and 1746





Layers of London

Locations of
pickpocketing
offences
recorded in 'Old
Bailey Online'

Home | LOCATING LONDON: x
www.locatinglondon.org

Maps Data

[Advice on interpreting results ...](#)

The Old Bailey Proceedings.
Offence category: Theft, Offence subcategory: Pocketpicking.

Display as:
Pins (per hit)

[Remove](#)

[Add data](#) [Reset view](#) [Clear all data](#)

connectedhistories
Integrated search across 15 major electronic resources in early modern and 19th-century British history — over 10 billion words

Advertisements

[Google Maps Historical](#)
Earth.Google.com/Pro
More Powerful Features To Better Enable Companies. Free

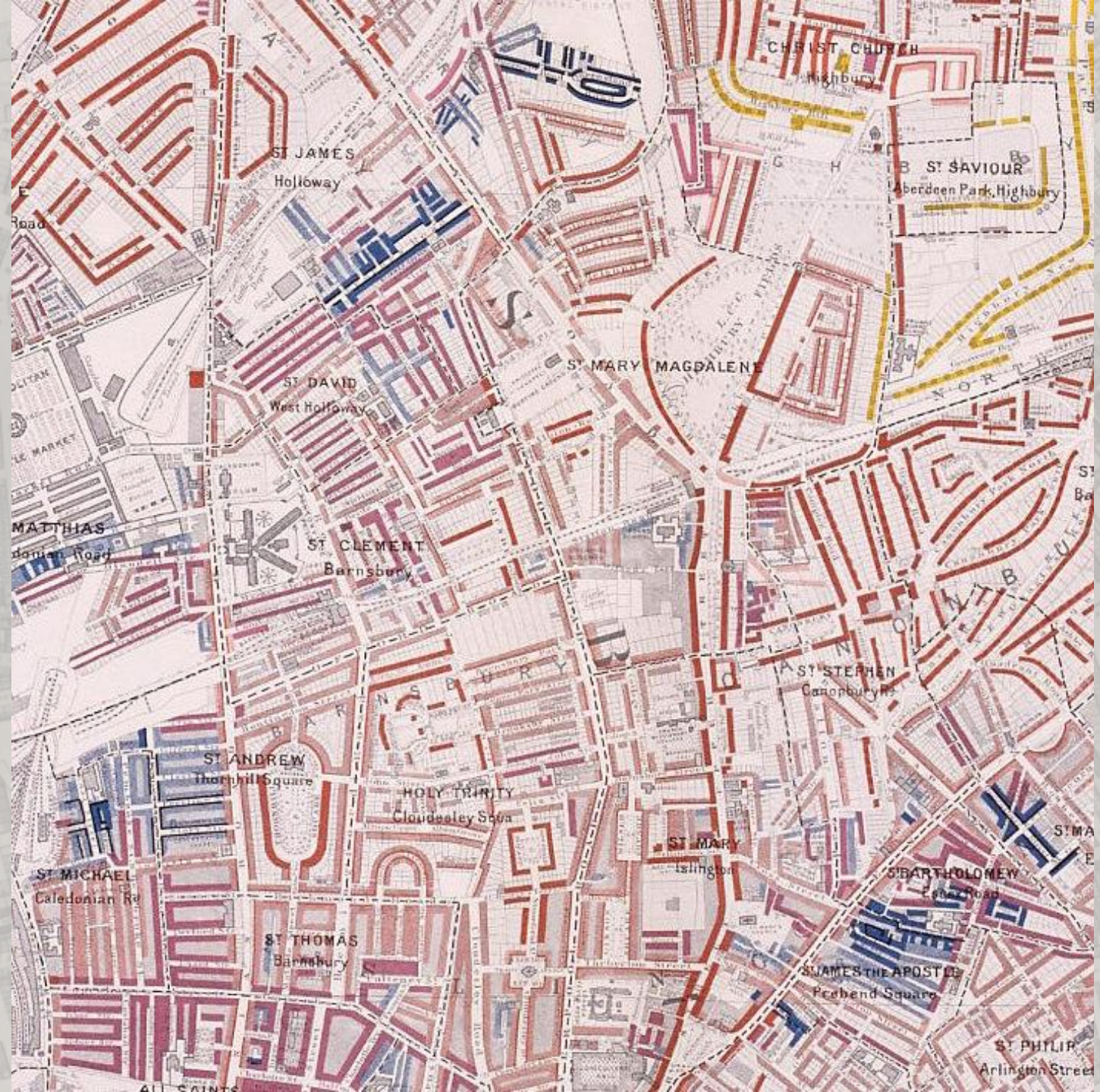


1746

Google

Terms of Use

Booth Poverty maps, 1889
(via LSE)





London Bomb Damage Maps, 1945 (LMA)



Layer tools ▾

William Morgan's Map of the City of London, W...

Horwood (1799)

Greenwood (1828)

Choose new layers



Layer tools ▾

William Morgan's Map of the City of London, W.

Horwood (1799)

Greenwood (1828)

Choose new layers



Layer tools ▾

William Morgan's Map of the City of London, W.

Horwood (1799)

Greenwood (1828)

Choose new layers

ST. JAMES Clerkenwell

Classification	Colour
Lowest class. Vicious, semi-criminal.	Black
Very poor, casual. Chronic want.	Dark blue
Poor. 18s. to 21s. a week for a moderate family.	Light blue
Mixed. Some comfortable others poor.	Purple
Fairly comfortable. Good ordinary earnings.	Pink
Middle class. Well-to-do.	Red
Upper-middle and upper classes. Wealthy.	Yellow

Layer tools ▾

Bomb Damage (1945)

Charles Booth's Poverty Map (1886-1903)

[Choose new layers](#)

ST. ALBAN
Brooke Street
ST. PETER

West along Summers Place. 3 st. cobble paved.
thieves - very rough. constable kicked & knocked
about here last Saturday - a 'mixed lot' -

It as map - perhaps a line of black shd.
be added. Summers Ct on the ^S side - smelly.
→ stifling smell of wash. 9 adults & 3 children sitting out
in the narrow court. rents. 1 room 3/9 & 5/3.

W to Eyre St. Still 'not quite so bad as Summers Pl'
but rough. It as map. 3 st. shops. on the East
side are between Summers St & Clekenwell Rd are
Eyre Pl. 2 st. alt. organ grinders. not rough but very poor. men
Hajji

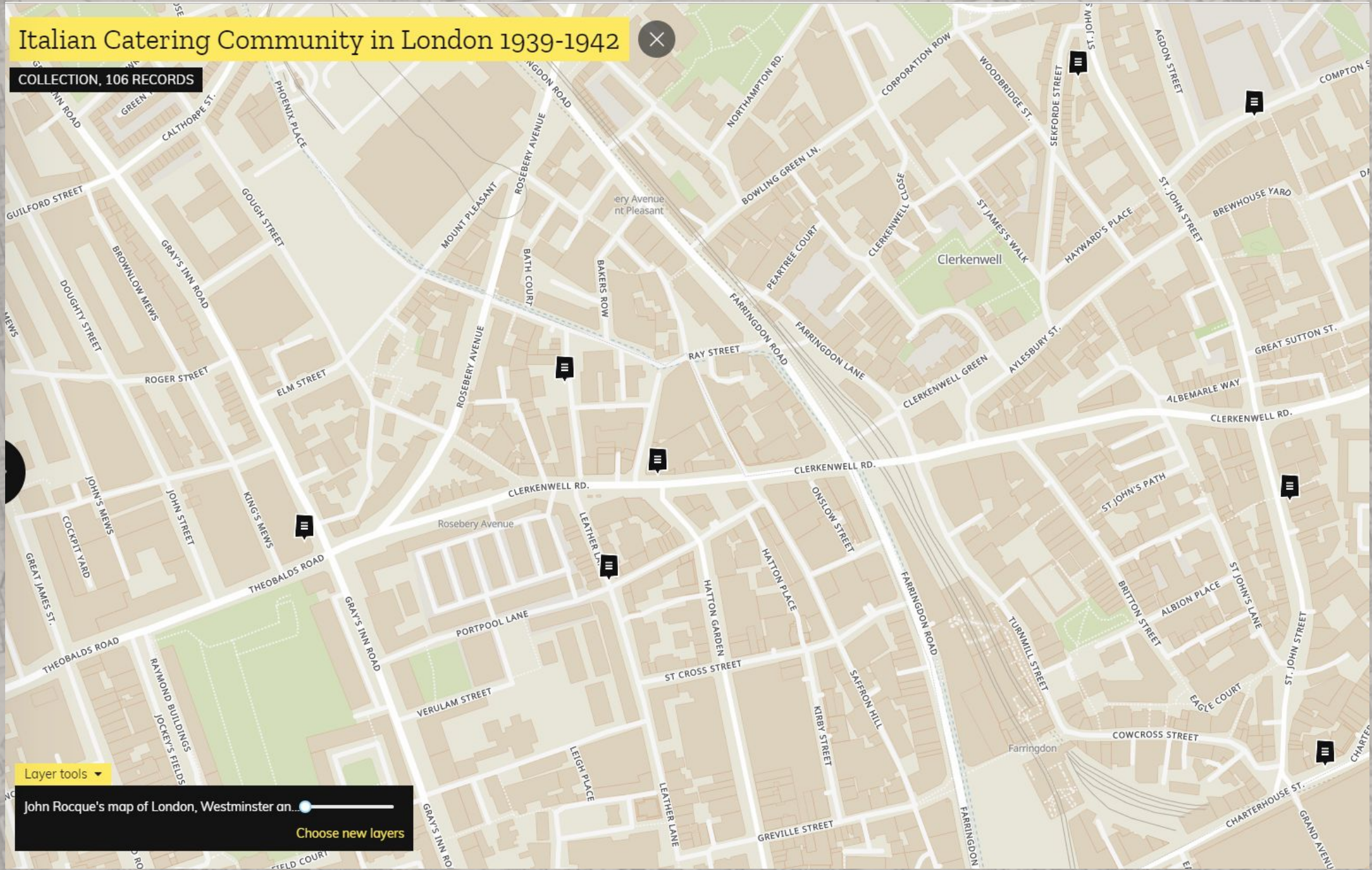
Italian Catering Community in London 1939-1942

COLLECTION, 106 RECORDS

Layer tools

John Rocque's map of London, Westminster an...

Choose new layers



We've a lot of hard work to do to make our historic maps more accurate. You can help out by fixing some old maps and aerial photographs.

Current mapping projects



[RAF Aerial Photos - Barnet](#)



[RAF Aerial Photos - Bexley](#)



[RAF Aerial Photos - Brent](#)



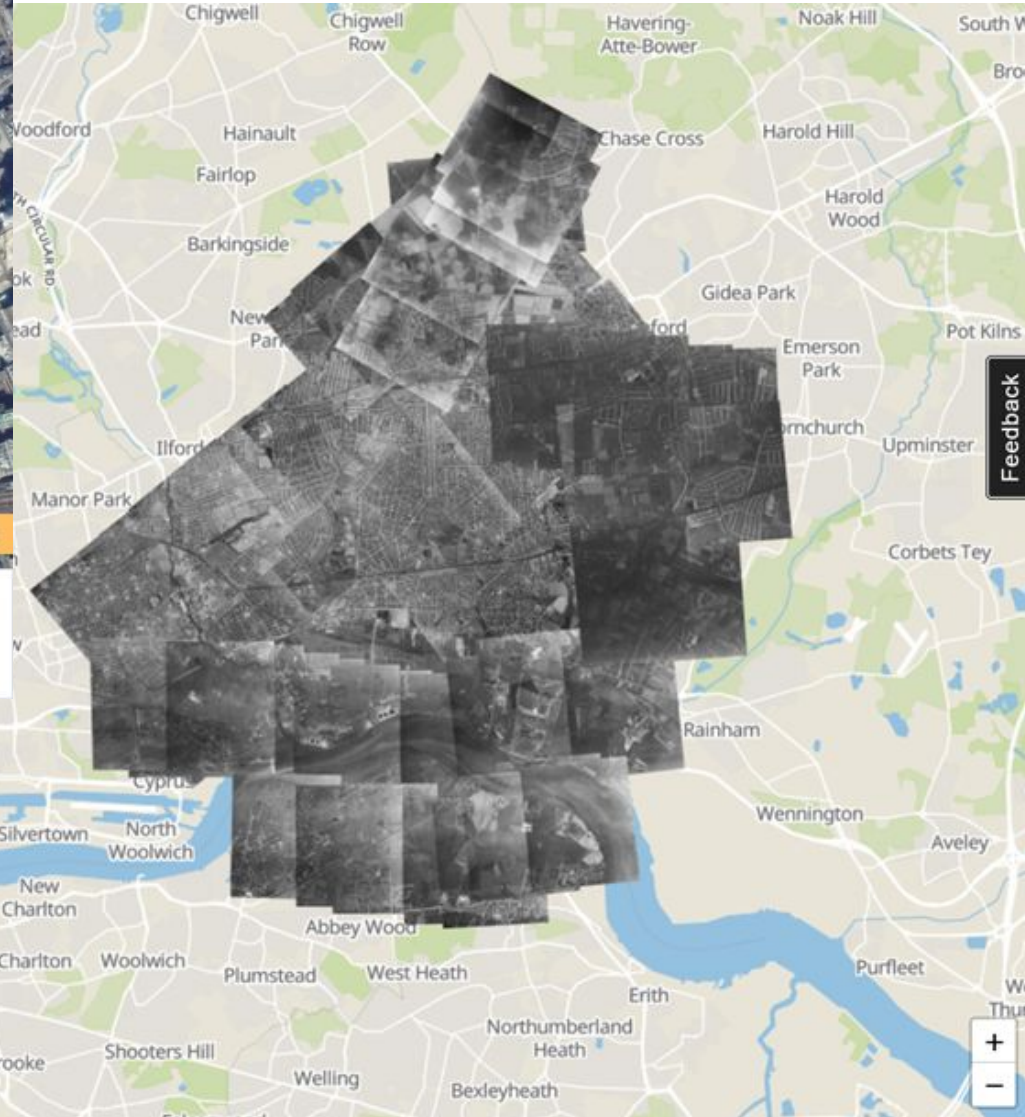
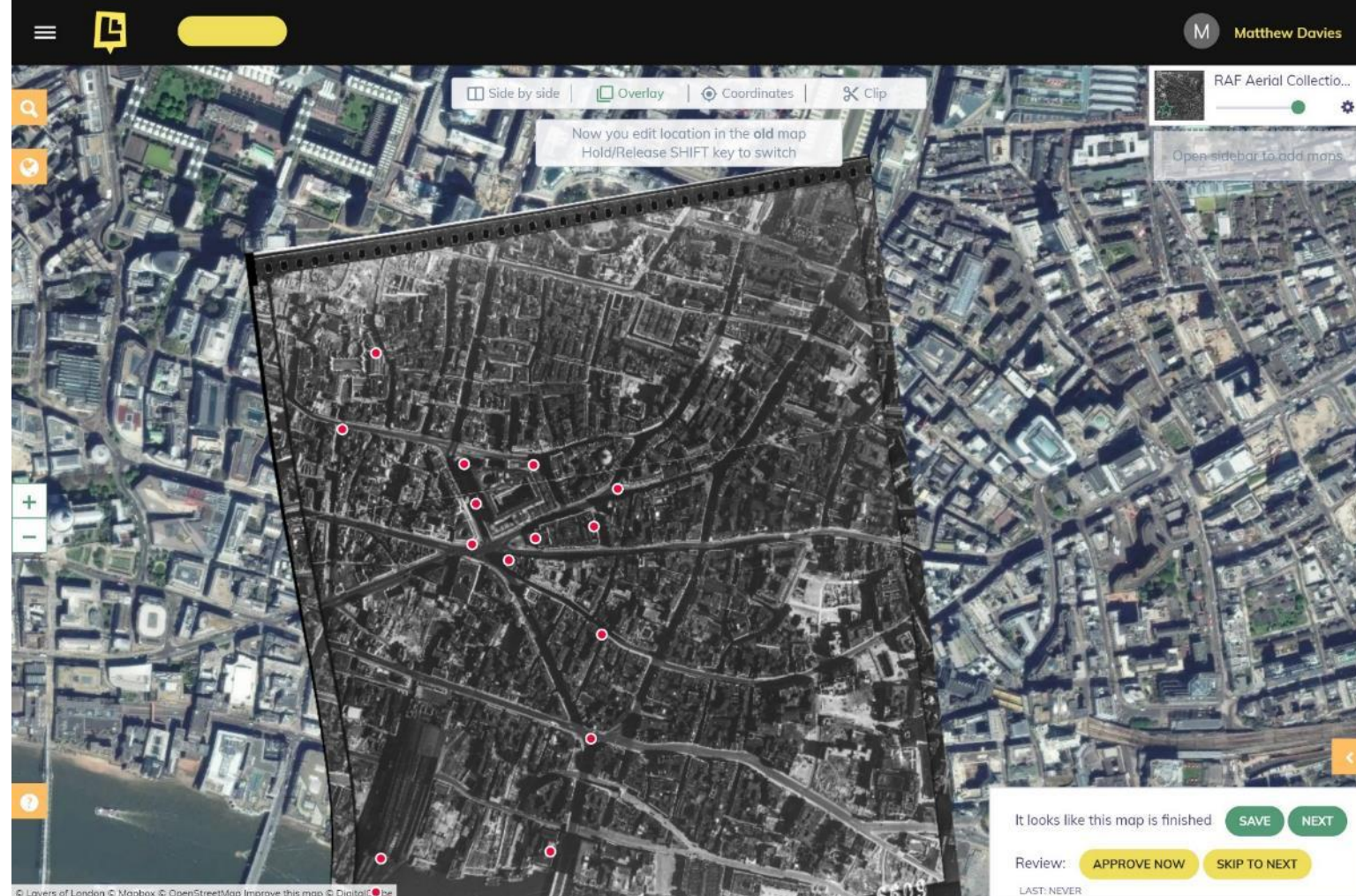
[RAF Aerial Photos - Bromley](#)



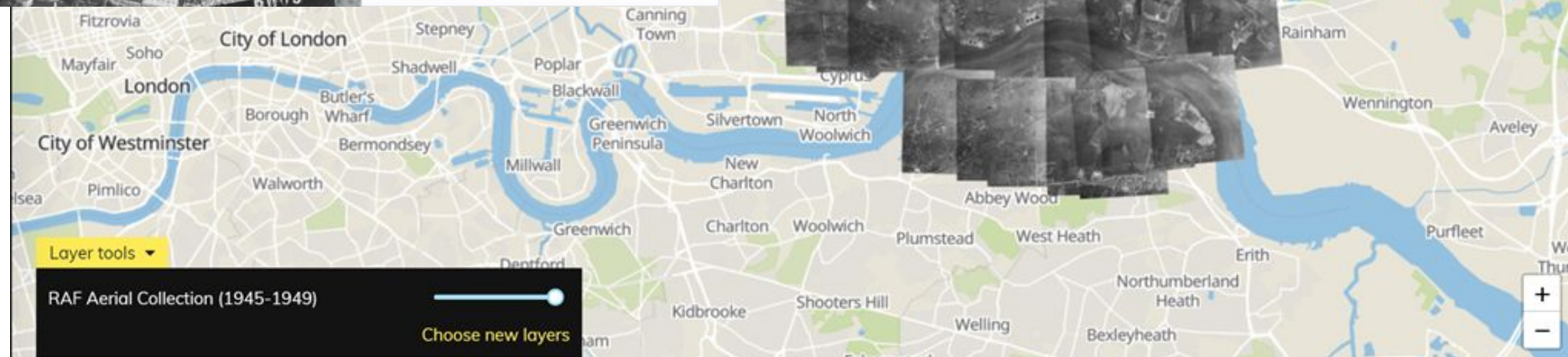
[RAF Aerial Photos - Camden](#)



[RAF Aerial Photos - City Of London](#)



RAF Photos, 1945-48, georeferencing project





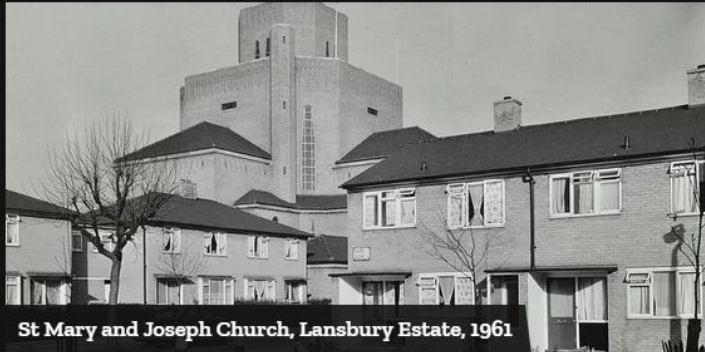
Housing London: London County Council Collections

COLLECTION, 169 RECORDS



About the 'Housing London' collection

'Housing London' is a curated collection of photographs of 130 London County Council housing developments. The majority of the photographs focus on estates in inner London, following the boundaries of the Metropolitan Boroughs. [Read more](#)



St Mary and Joseph Church, Lansbury Estate, 1961



Abbey Estate, 1960



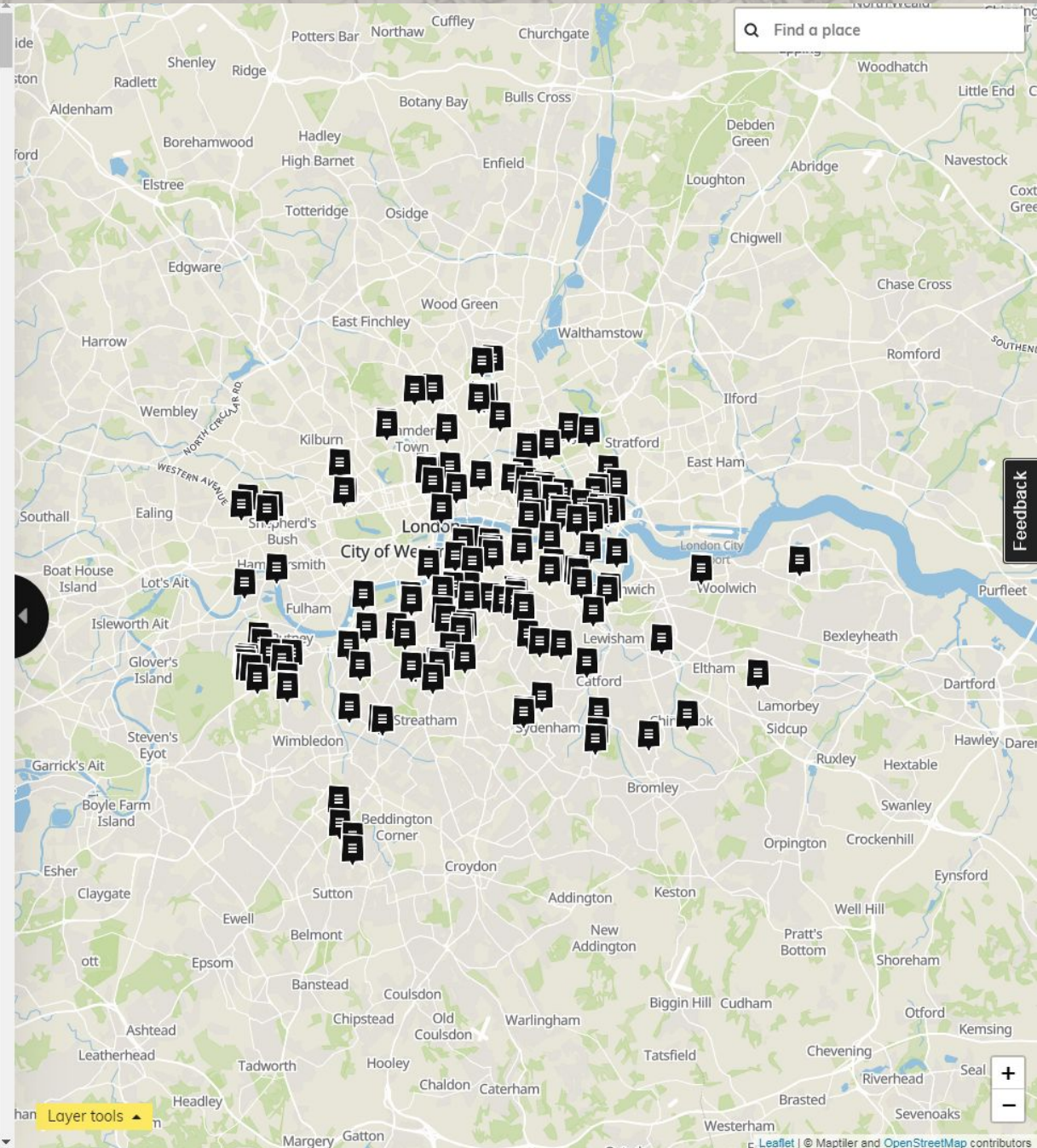
Aboyne Road Estate, 1962



Ackroydon Estate, 1954



LMA's LCC photo collection



Find a place

Feedback

Layer tools

Leaflet | © Maptiler and OpenStreetMap contributors



1921
By Jane Muncaster

Oliver Twist Court, 1921

The Dickens Estate was built on the site of Jacob's Island, one of the worst slums in London. In addition to overpopulated and poor-quality housing, in the mid-nineteenth century the area was criss-crossed by stagnant, sewage-filled ditches, which earned it the nickname "Venice of drains". It became especially notorious as the final resting place of Bill Sykes, the brutish villain of Charles Dickens's *Oliver Twist*. After visiting the area with the river police, Dickens wrote that it contained "every repulsive lineament of poverty, every loathsome indication of filth, rot, and garbage".

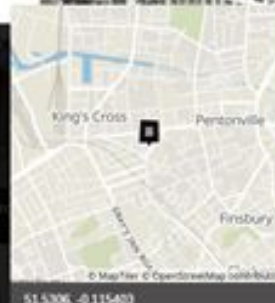


© Mapbox © OpenStreetMap contributors
51.5001, -0.069421



1969
By Jane Muncaster

Weston Rise Estate, 1969



© Mapbox © OpenStreetMap contributors
51.5306, -0.115403



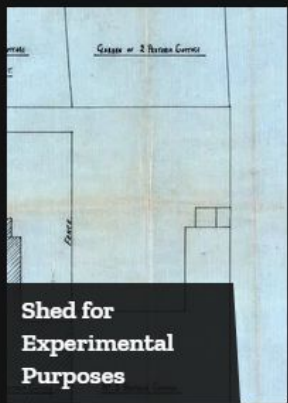
In 1959 the London County Council (LCC) secured part of the site of the Weston Rise Estate as part of a clearance scheme. The rest of the estate was secured through purchase of the land. In 1964 it was decided that Howell, Killick, Partridge & Amis (HKPA) would be the architects, alongside John Partridge.

The plans of the estate were displayed at the Royal Academy that same year. When construction started in 1965 the LCC had been dissolved and the Greater London Council took ownership of the site.

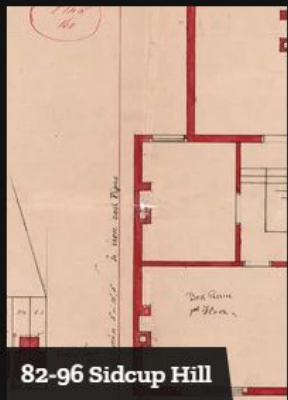
Image Copyright: London Metropolitan Archives (City of London Corporation)



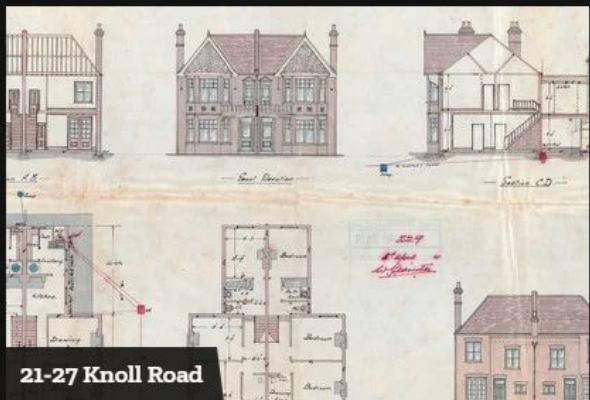
Kent Silk Mills Proposed Drainage Plan



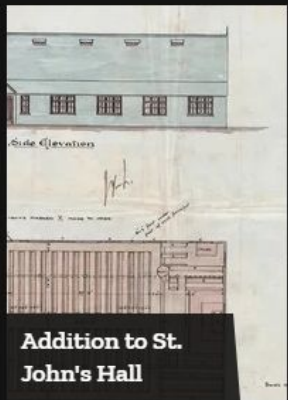
Shed for Experimental Purposes



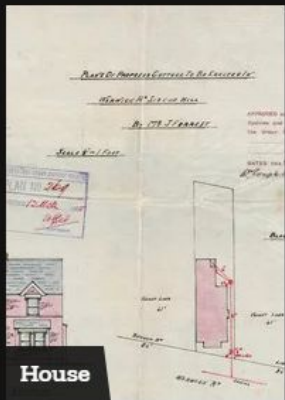
82-96 Sidcup Hill



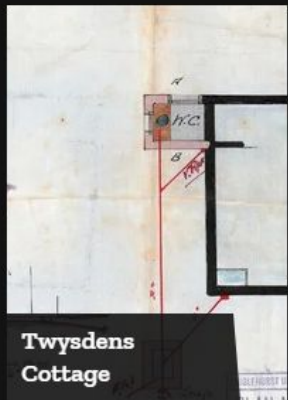
21-27 Knoll Road



Addition to St. John's Hall



House



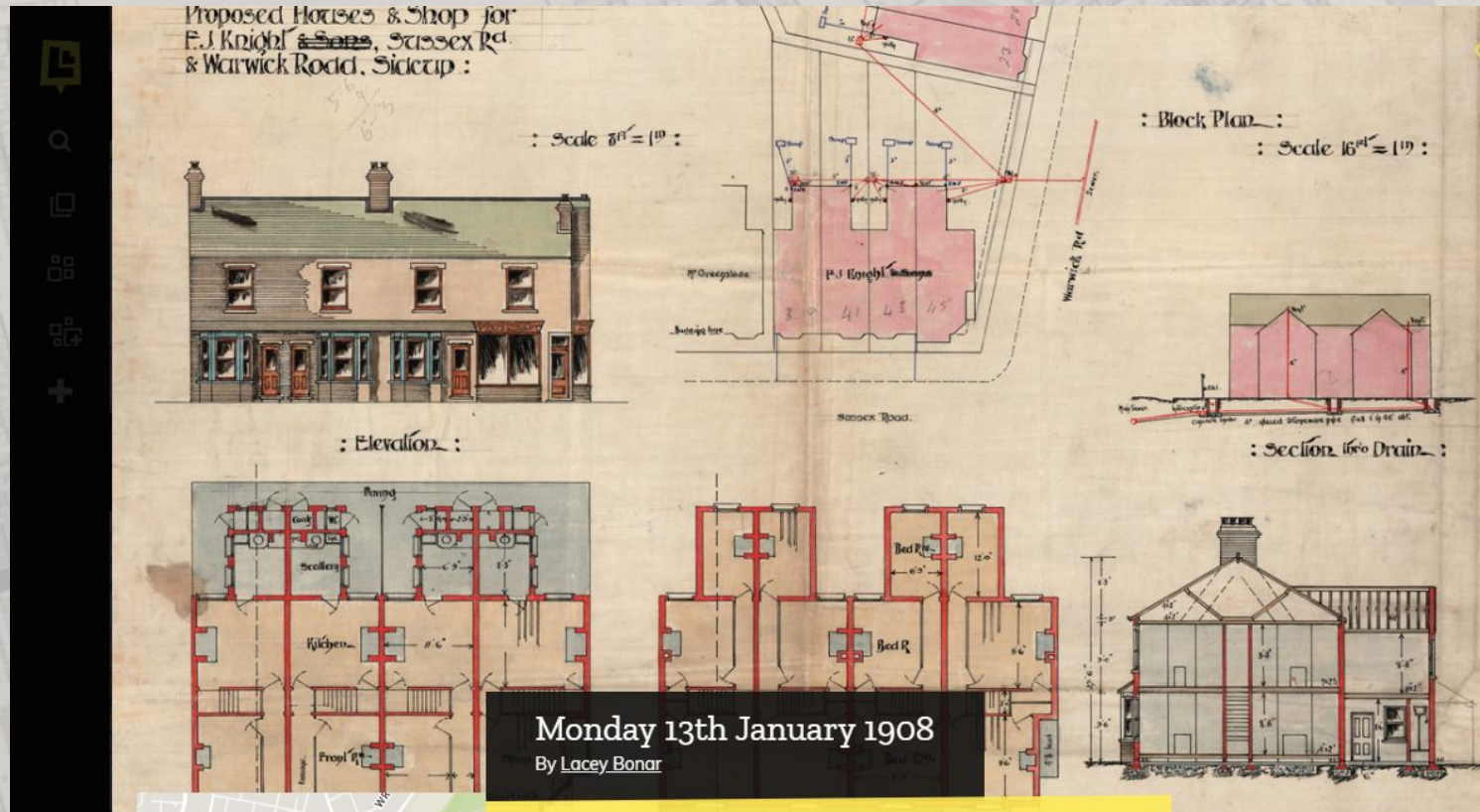
Twysdens Cottage



Plan for Mr. F. J. Knight, Sidcup



Another plan for Mr. F. J. Knight, Sidcup



Proposed Houses & Shop for F. J. Knight, Sussex Rd. & Warwick Road, Sidcup :

Scale 1/8" = 1' :

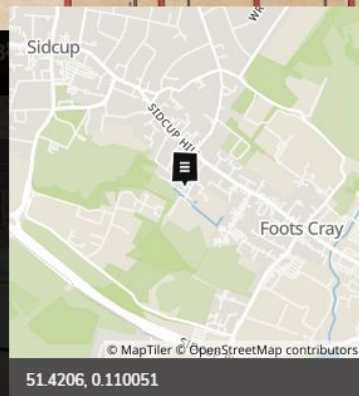
Block Plan :

Scale 1/16" = 1' :

Elevation :

Monday 13th January 1908

By Lacey Bonar



51.4206, 0.110051

23-27 Warwick Road

Plan for the construction of 3 houses and shops for Mr. F. J. Knight. This building proposal was approved by the Chislehurst Urban District Council. This plan also includes proposed shops and houses on Sussex Road.

Related Links

- [23-27 Warwick Road](#)

<https://www.layersoflondon.org/map/records/340/media/9126>



A Political History of Lambeth

COLLECTION, 6 RECORDS

Right across the Thames from Westminster, Lambeth's geographical position has made it a symbolic arena for protest and political awakenings. This collection explores key historical events through Lambeth's public spaces and emblematic buildings.

[Read more](#)



19th Century Ch...



on Kennington



Jewish London 1914-1918: Synagogues and Organisation

COLLECTION, 3 RECORDS

'We Were There Too: London Jews in the First World War' is a Heritage Lottery Project that is dedicated to recording the Jewish impact during the First World War. This collection contains important places, synagogues and organisations that were central to Jewish life, both in the East End and London as a whole.

[Read more](#)



Soup Kitchen for the Jewish Poor



A Selection of John Tallis's London Street Views Published in 88 parts, 1838-40.

COLLECTION, 6 RECORDS

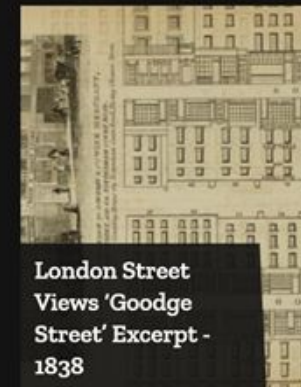
This collection is dedicated to highlighting London based social histories, street-level illustrations and digitised excerpts of various locales which are all taken from John Tallis's famous 'London Street Views 1838'. For the historically curious Londoner, you can have fun comparing these street views, and area descriptions to contemporary appearances and current neighborhood perceptions. Have [Read more](#)



London Street Views 'Farringdon Street' Excerpt - 1838



London Street Views - John Tallis 1838



London Street Views 'Goodge Street' Excerpt - 1838



London Street Views 'Shoreditch Origins' Excerpt - 1838

Other collections added to the site

Olive Morris and the British Black

Project Team

Matthew Davies (Project Director)

Seif El Rashidi (Project Manager)

Amy Todd (Public Engagement Officer)

Karina Flynn (Volunteer Coordinator)

Lewis Calvert (GIS Officer)

Rebecca Read (Project administrator)

Nathaniel Telemaque (Senate House Library Intern)

Liam Cunningham (communications/social media)



Layers of London

www.layersoflondon.org

layersoflondon@london.ac.uk



<https://www.facebook.com/layersoflondonihr/>



[@layersoflondon](https://twitter.com/layersoflondon)