



Creating Hackney as Home: Five reflections on a London Borough

Melissa Butcher
Department of Geography
Birkbeck, University of London
m.butcher@bbk.ac.uk
www.hackneyashome.co.uk

**EAST OF
ENGLAND**



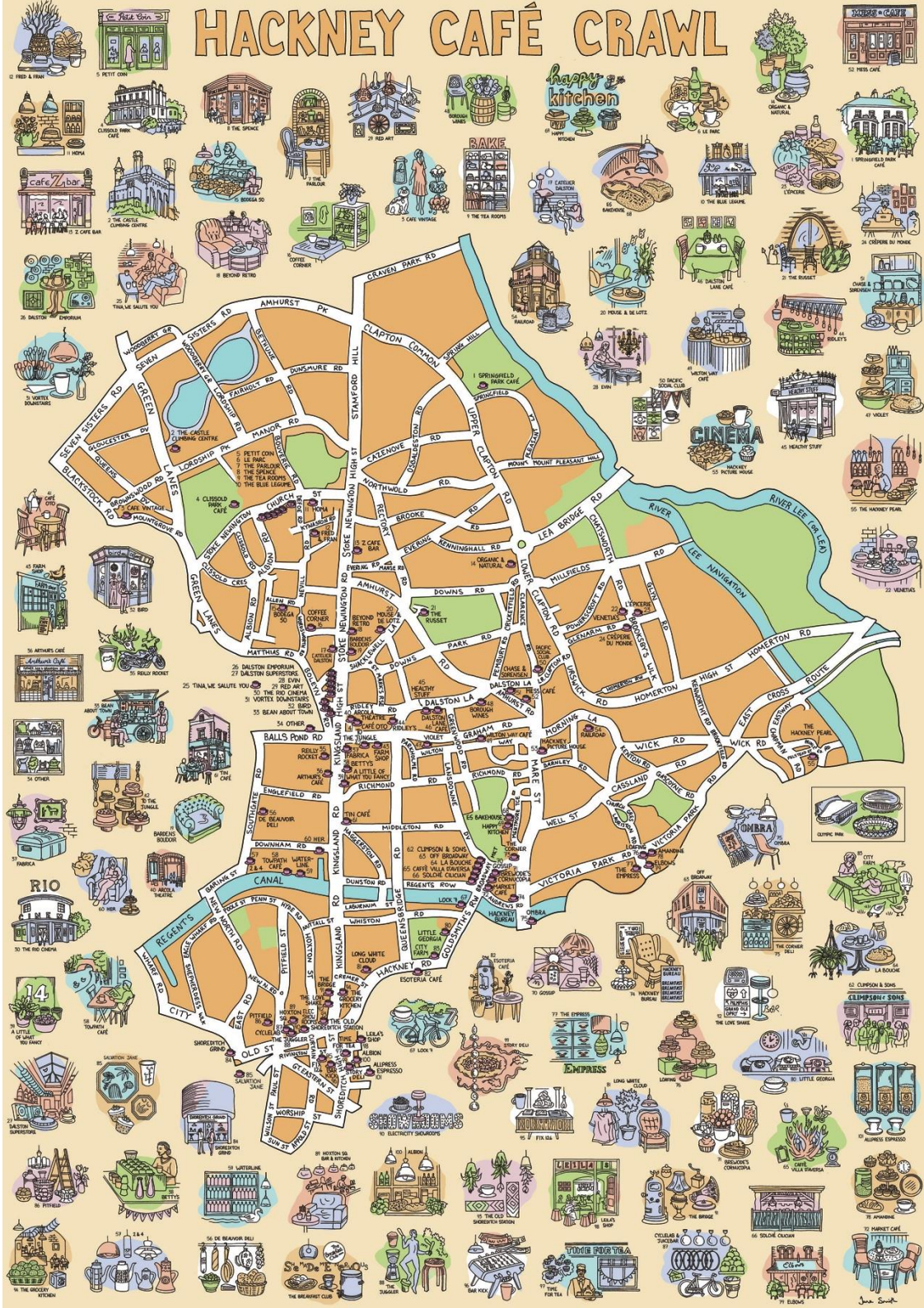
**SOUTH EAST
ENGLAND**

LOCAL GOVERNMENT BOUNDARY COMMISSION FOR ENGLAND

Electoral Review of Hackney - Final Recommendations

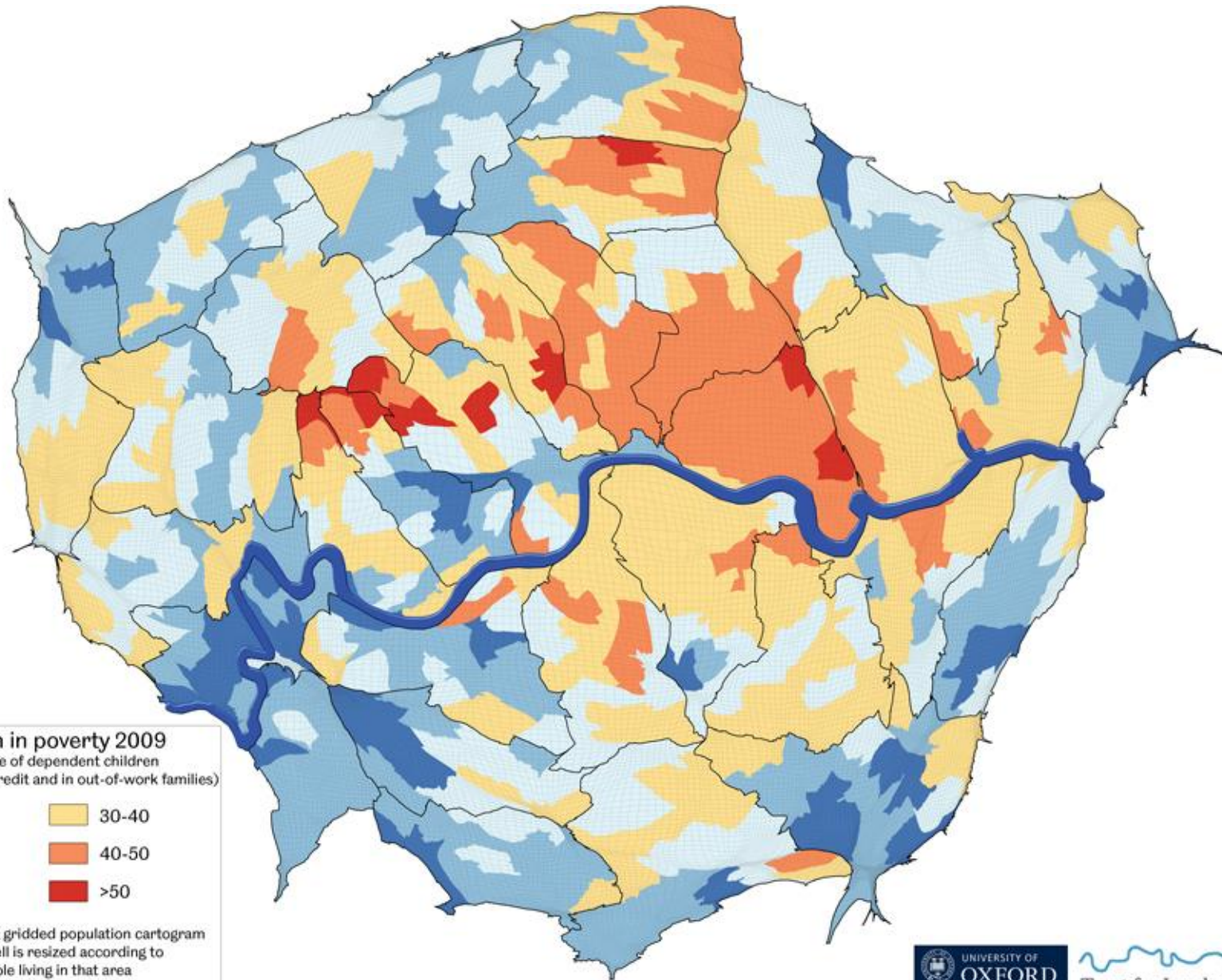


HACKNEY CAFÉ CRAWL





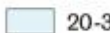



www.janeillustration.co.uk/blog/2012/07/hackney-cafe-crawl-and-hackney-changes-maps/

Jane Smith



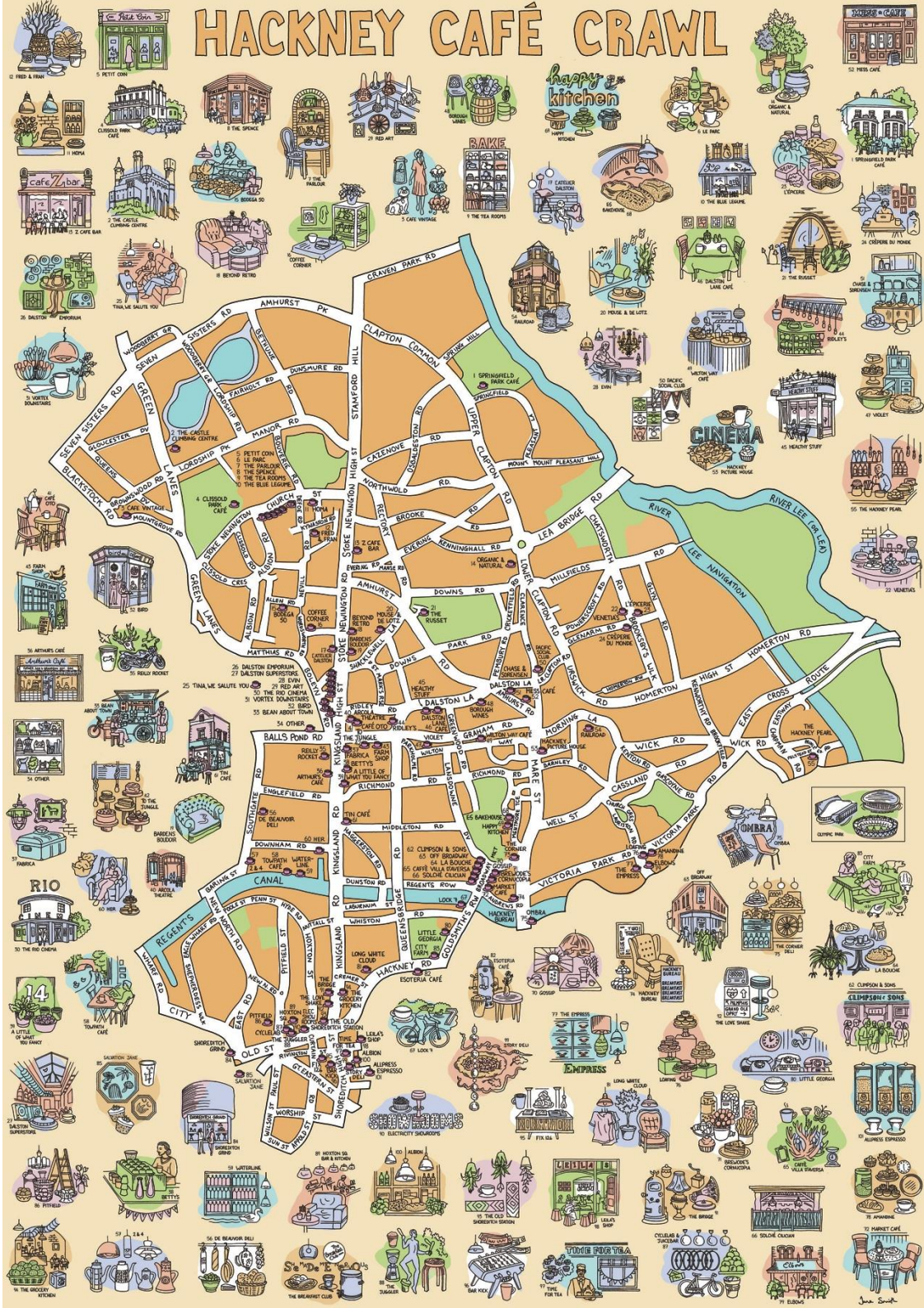
Children in poverty 2009
 (percentage of dependent children receiving child tax-credit and in out-of-work families)

 <10	 30-40
 10-20	 40-50
 20-30	 >50

Map projected on a gridded population cartogram where every grid cell is resized according to the number of people living in that area
 Data Sources
 Population: UK Office for National Statistics (2011)
 Child poverty: Greater London Authority (2011)

The number of people living in that area
 Data Sources
 Population and residential income by the
 UK Office for National Statistics (2010)

HACKNEY CAFÉ CRAWL



www.janeillustration.co.uk/blog/2012/07/hackney-cafe-crawl-and-hackney-changes-maps/

THE
FISHERIES

15 STUDIOS & 150
WORKSPACES FOR
ENTREPRENEURIAL
AND CREATIVE
INDUSTRIES

FOR MORE INFO, VISIT



THEFISHERIES.LONDON

THE
FISHERIES

ER, THEY USED TO BE HERE,
YOU TORE 'EM DOWN

HELP
I CAN'T
BREATHE



FOR MORE INFO, VISIT



THEFISHERIES.LONDON

Monét's film: *Growing Up and Out of Space*

'My film was inspired by a dream I had early on in the project. I have tried to recreate that images in my film, using camera angles to give the perspective of a child. In my film you will be following me through the ages of six to sixteen and the differences that occur across these ages. My dialogue is partly spoken work and partly my poetry, which gives a sense of my personal feelings over this time.'

Re-imagining 'home'

- Polysemous accounts of place.
- Imaginations of the city that constitute place, but also generate conflict.
- Entanglements of contradiction, synchronicity, loss and mobility.





Youth & Gentrification

- Evidence of connection between environmental experience and well-being.
- Unequal power relations in the face of urban change ('who are the changes for?').
- Spatial dislocation and affective displacement associated with stigmatisation.
- *But* negative perceptions of gentrification at times confounded by lived experience, eg, feelings of greater security.



Youth & Gentrification

A series of tensions:

- Designed space vs reducing public space
- Designed space vs lived use of space
- Youth culture as anomalous vs valorisation

Tensions lead to a more complicated relationship between young people and processes of gentrification.

Conclusion

- Ambivalence about gentrification's impact: speed of change often more an issue than change itself.
- Complicated relationships with newer residents, 'hipsters'.
- Gentrification can provide positive conditions of alterity.
- The possibility to re-imagine a reversioning of space and a place for themselves within it.
- But still a dominant set of social/spatial structures which they have to navigate.

MEANWHILE IN EAST LONDON, LUNATICS DECORATE A BUILDING...



TOOF

THE OODL NAPIER



The Red Theatre
River Lee Navigation
Hertford Union Canal
Old Ford Locks

